



by Imayo Fine Jewellery



K18 South Sea Pearl Diamond Sapphire Ring  
P11.1mm, S1.73ct, D0.45ct  
Usual \$11,800  
**\$8,260**



K18 South Sea Pearl Diamond Ring  
P13mm, D0.60ct  
Usual \$13,500  
**\$9,450**



PT/18K Keshi Pearl Diamond Ring  
P7 x 8mm, D0.07ct  
Usual \$5,000  
**\$3,500**



K18 South Sea Pearl Yellow Sapphire & Garnet Earrings  
P9 x 10mm, S4.76ct, G0.82ct  
Usual \$20,000  
**\$14,000**



K18 South Sea Pearl Diamond Earrings  
P12mm, D0.04ct  
Usual \$4,600  
**\$3,200**



K18WG South Sea Pearl Diamond Earrings  
P11mm, D0.10ct  
Usual \$4,200  
**\$2,940**



K18 Mabe Pearl Earrings  
Usual \$2,900  
**\$2,030**



K18 Fresh Water Pearl Diamond Earrings  
P15mm, D0.05ct  
Usual \$3,100  
**\$2,170**



K18 South Sea Pearl Diamond Brooch  
P15.3mm  
Usual \$3,000  
**\$2,100**



K18 South Sea Pearl Diamond Brooch  
Usual \$2,900  
**\$2,030**



K18 Fresh Water Pearl Ruby Brooch  
R0.02ct  
Usual \$3,850  
**\$2,690**



K18 Keshi Pearl Ruby Brooch  
R0.07ct  
Usual \$2,900  
**\$2,030**



SIL Akoya Pearl & Shell Brooch  
P8mm  
Usual \$950  
**\$760**



SIL South Sea Pearl Necklace  
P12 x 13mm, 47cm  
Usual \$6,200  
**\$4,340**



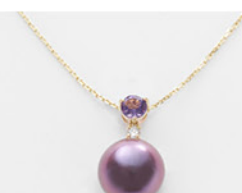
SIL South Sea Pearl Crystal Necklace  
P10 x 18.5mm, 95cm  
Usual \$4,200  
**\$2,940**



SIL South Sea Pearl Necklace  
P10 x 14mm, 90cm  
Usual \$4,800  
**\$3,360**



K18WG South Sea Pearl Diamond Necklace  
P14.6mm, D0.21ct  
Usual \$5,800  
**\$4,060**



K18 Fresh Water Pearl Amethyst Diamond Necklace  
P10.2mm, A0.21ct, D0.04ct  
Usual \$2,700  
**\$1,890**



K18 Fresh Water Pearl Diamond Necklace  
P15mm, D0.06ct  
Usual \$3,200  
**\$2,240**



K18WG Keshi Pearl & Fresh Water Pearl Necklace  
P16 x 7mm  
Usual \$2,600  
**\$1,820**



**OPENING SPECIAL**

K18 Akoya Pearl Diamond Bracelet  
P5.5mm x D0.18ct  
Usual \$1,900  
**\$980**

Limited to  
8pcs only